



# ARBORICULTURAL ASSESSMENT

Site Address: Oranga Development – Stage 3  
properties

Prepared for: Korahi Alliance Ltd.

Purpose of Report: Arboricultural assessment of Oranga  
Development – Stage 3

Report Compiled by:	Chris Scott-Dye
Reviewed by:	Matthew Paul
Date of Report:	4 June, 2020

1.0	Introduction	3
2.0	Scope of the Report	3
3.0	Plan References	3
4.0	Arboricultural Assessment & Summary of the Tree Survey	4
5.0	Tree Protection Methodology	5
6.0	Conclusion	7
	Appendix 1-2	9 - 29

## 1.0 Introduction

Peers Brown Miller Ltd (PBM) has been commissioned by Korahi Alliance Ltd, on behalf of Kāinga Ora (KO), to contribute information relevant to Stage 3 of the Oranga project. This stage involves proposed construction of new residential housing over fifty-four properties, which have been divided into nine lots - referenced as OR73, ST16, NS1, ST42, ST55, RC135, RC161, NM13 and RS15. The sites are all located within Onehunga, Auckland.

These properties contain existing dwellings and assets owned by KO.

The existing dwellings would be removed before the construction of the new developments commence. As part of the proposal, the Stage 3 re-development involves preparatory site works to facilitate the future housing development undertaken either by KO or a private build partner.

This tree survey report is to serve as an assessment of trees growing inside the bounds of the proposed development area, or directly adjacent to, with a focus on any trees within the sites that are considered worthy of retention as part of any future development scheme.

## 2.0 Scope of the Report

The purpose of this report is to identify which specimens within KO sites are considered worthy or appropriate to retain for a housing development. This will be achieved by:

- Provide a tree survey for all private trees within the boundaries of the sites and any trees of importance on neighbouring sections. General comments will be recorded on their stature and condition.
- Identify the protective status of those trees growing within the scope of project in terms of those rules outlined in the Auckland Unitary Plan.
- Provide advice for protecting those trees proposed for retention as part of the proposal.

## 3.0 Plan Reference

A development plan has been provided by KO. This plan is referenced as;

- *Oranga 2.52 Staging – Stage 3 Plan, Active Baseline Masterplan Revision N5.*

This plan indicated which properties are to be included as part of the Oranga Stage 3 development.

The subject tree locations are outlined on individual screenshots from Google Earth satellite imagery, with the approximate lot boundaries also depicted for reference. These plans are included as Appendix 1.0 of this report.

Specific information pertaining to each tree has been provided in the Tree Schedules, also included as Appendix 1.0 of this report.

## **4.0 Arboricultural Assessment & Summary of the Tree Survey**

The project area is located in a residential housing area under KO ownership. The existing land and dwellings are largely devoid of significant trees or vegetation, with exceptions to the odd sites amongst the lots.

The proposal will involve the demolition of the existing housing with new, more intensive housing developments to be constructed within the proposed super lots. As such, the majority of trees or vegetation would be removed to facilitate the construction of the proposed housing developments.

Overall, a total of **117** trees/tree groups were surveyed. As visible in the Tree Schedules (Appendix 1), a colour code system has been used in order to help differentiate between the trees and the recommended action - as detailed below;

- **56** Trees/tree groups are recommended for removal (all within the lots)
- **14** Trees/tree groups recommended to be considered for retention (all within the lots)
- **47** Trees/tree groups recommended for retention (includes trees within the lots, on any adjacent road reserves and neighbouring properties)

Several factors have been analysed in order to inform which trees are recommended for retention within the future landscape use. This includes; the locations within the sites, the health/structural integrity, as well as the species and stature of each tree. A Tree Schedule for each site is included as Appendix 1.0 of this report.

It is noted that all street trees are protected and should be retained/worked around where practicable, particularly when configuring the locations of proposed vehicle crossings.

Also, worth considering during the initial site planning are trees located on adjacent properties. Proposed excavations for future developments should be respectful of the root zones of such trees in order to avoid adverse effects on their health/structural stability.

Any tree to be retained within the site as part of the proposed development will need to be assessed in terms of its function in the newly created environment. It is recommended that future growth and suitable site surrounds be considered when selecting any tree for retention as part of the new site layout. Further information regarding these matters can be provided as this project progresses.

In order to maintain consistency throughout the Oranga Development stages, the tree numbers are sequential, carrying on from Oranga Stages 1 & 2. Several trees had already been allocated tree numbers. Therefore, the original numbers have been adopted in this report, rather than assigning a new number to a tree.

## **5.0 Tree Protection Methodology**

This section outlines a set of appropriate works methods and tree protection measures that should be adopted and put in place to ensure that adverse effects on the trees those being retained within the project area are minimised and/or avoided.

- a) Prior to any works commencing on the site in the vicinity of any of the trees proposed for retention, a meeting should be held at the site to discuss all issues pertaining to the protection of the trees and to gain a common understanding of the relevant conditions of consent in that regard. Present at the meeting should be;
  - The consent holder
  - The site foreman or project manager
  - The worksite supervisory arborist
  - Any other relevant personnel
  
- b) Protective fencing should be installed wherever practicable at the dripline edge of trees being retained. This fencing shall remain in place for the duration of the project in order to best protect the subject trees. The

fencing is to be rent-o-style 1.8 metre steel mesh sections, or water filled barriers where no other option is available. The location of this fencing is to be confirmed and approved prior to any works being undertaken within the vicinity of the subject tree(s).

- c) Temporary relocation of the fencing can be undertaken (under supervision of the works arborist) at the point when specific works are to be carried out within the driplines of the subject trees - with the fencing to be re-erected following that specific activity.
- d) The worksite arborist should be present during any excavations through the dripline of any tree to be retained.
- e) All removal of hard surfaces to be removed from within the vicinity of all trees proposed for retention is to be undertaken under the supervision of the works arborist. Care must be taken to not unnecessarily excavate within the dripline of any tree - with material to be removed by hand if necessary.
- f) If any significant roots are encountered during excavation in the dripline of any retained tree, that root should be accommodated, unless the arborist is satisfied that severance of such a root would not cause a deterioration of the health of the tree. No roots beyond the approved thresholds are to be removed.
- g) No heavy machinery or equipment or materials should be stored or deposited within the dripline area of any tree that is proposed for retention. If any materials do need to be deposited within the dripline of any tree a sheet of plastic or a tarpaulin should be laid down first.
- h) When machinery is to be used beneath the dripline of any retained tree, track movement must be kept to a minimum - with materials preferably installed progressively from the previously metaled/hard surface.
- i) Any pruning of retained trees is to be undertaken by a suitably qualified and experienced arborist in accordance with modern arboricultural practice. All pruning is to be undertaken in consultation with the client's appointed works arborist.
- j) Compliance with any conditions of consent relating to tree protection would be monitored by the appointed works arborist - with the detail of each visit and communication being logged. The completed log would be

provided to the consent holder at the completion of the project to serve as a compliance report.

## 6.0 Conclusion

This report has been prepared to provide an arboricultural overview for the trees within the bounds of the Stage 3 Oranga Development.

The majority of trees growing throughout the private properties are noted as being non-exemplary in terms of their species. This is often due to a lack of formative pruning, or poor pruning practices, or as a result of a poor or dangerous form. Also, many of the tree species have been identified as weed species.

As detailed in Section 4.0 and in the Tree Schedules in Appendix 1;

- **56** Trees/tree groups are recommended for removal (all within the lots)
- **14** Trees/tree groups are recommended to be considered for retention (all within the lots)
- **47** Trees/tree groups are recommended for retention (includes trees within the lots, on any adjacent road reserves and neighbouring properties)

Arboricultural input regarding proposed construction around these trees is recommended, as well as ongoing arborist supervision of any proposed works around the trees (As detailed in Section 5.0 above).

Please feel free to contact Peers Brown Miller Ltd if any further arboricultural input is required.



**Christopher Scott-Dye**  
**Consultant Arborist**  
**Peers Brown Miller Ltd**

**Reviewed By**

A handwritten signature in black ink, appearing to read 'M Paul', written in a cursive style.

**Matthew Paul**

**Director**

**Peers Brown Miller Ltd**



## Appendix 1.0

The following categories have been used within the proceeding tree survey tables. A description for each category is defined below;

- **ID#:** Refers to the number assigned to each tree (also identified as such on the accompanying tree survey plans).
- **Common name:** The generally accepted common, or Maori, name of the tree is given.
- **Species:** The genus and species, and cultivar or variety where known, is given. Where the species is unknown the tree is identified as: (Genus) sp.
- **Height:** refers to the approximate height of the tree in metres.
- **Canopy radius:** refers to the approximate radius of crown spread of the tree in metres.
- **Circumference:** refers to the approximate circumference of the tree stem in millimetres, as measured at 1.4 metres and the aggregate girth of stems greater than 250mm in diameter for multi-stemmed trees.
- **Protected status:** This refers to the protective status of the tree as defined by the Auckland Unitary Plan.
- **Proposed action:** Comments relating to the recommended retention or removal of the specific tree.

## **OR73 (OR-073)**



**Figure 1 – Tree locations for OR 73**

Tree #	Common name	Species	Height (m)	Canopy radius (m)	Circumference	Protection	Proposed action
572	Melia	Melia azedarach	7	8	1860	Road Reserve	Retain
573	Melia	Melia azedarach	5	3	400	Protected - Road Reserve	Retain
574	London plane	Platanus xacerifolia	16	9	3500	Not protected - Private	Retain
575	Ash	Fraxinus angustifolia	8	5	1320	Not protected - Private	Remove
576	Queensland box	Lophostemon confertus	15	6	2000	Not protected - Private	Remove
577	Sheoak	Casuarina cunninghamiana	15	8	2000	Not protected - Private	Remove
578	Chinese fan palm	Trachycarpus fortunei	11	3	1000	Not protected - Private	Remove
579	Feijoa	Acca sellowiana	4	3.5	600	Not protected - Private	Remove
580	Brazilian pepper tree	Schinus terebinthifolius	5	5	1000	Not protected - Private	Remove
581	Avacado	Persea americana	12	7	2000	Not protected - Private	Remove
582	Guava	Psidium guajava	5	2	900	Not protected - Private	Remove
583	Bottlebrush	Callistemon sp.	6	7	1000	Not protected - Private	Remove
584	Photinia	Photinia x fraseri	6	5	1500	Not protected - Private	Neighbouring tree with canopy overhanging into the site
585	Cypress Sp.	Cypress Sp.	10	4	1200	Not protected - Private	Could be retained. Good form

586	Willow Myrtle	Agonis flexuosa	12	9	4000	Not protected - Private	Form and health fair, good. Could be retained
587	Water gum	Tristanopsis laurina	6	4	1000	Not protected - Private	Could be retained
588	Prunus Sp.	Prunus Sp.	7	7	1500	Not protected - Private	Could be retained
589	Citrus Sp.	Citrus Sp.	6	5	1000	Not protected - Private	Remove
590	Pohutukawa	Metrosideros excelsa	18	12	10000	Protected Notable tree - Private	Retain – Notable
591	Titoki	Alectryon excelsus	3	1	200	Protected - Road Reserve	Retain
592	Titoki	Alectryon excelsus	3	1	200	Protected - Road Reserve	Retain
593	Washingtonia and Kowhai	Washingtonia robusta, Sophora microphylla	5	2	1000	Not protected - Private	Remove

## **ST16 (OR-026)**



**Figure 2 – Tree locations for ST16**

<b>Tree #</b>	<b>Common name</b>	<b>Species</b>	<b>Height (m)</b>	<b>Canopy radius (m)</b>	<b>Circumference</b>	<b>Protection</b>	<b>Proposed action</b>
47	Magnolia	<i>Magnolia grandiflora</i>	8	7	5500	Protected - Road Reserve	Retain
48	Eucalyptus	<i>Eucalyptus sp.</i>	16	6	8000	Not protected - Private	Remove
49	Coral tree	<i>Erythrina crista-galli</i>	5	6	7500	Not protected - Private	Remove
76	Golden Totara	<i>Podocarpus totara</i>	8	4	3500	Protected - Private	Retain
79	Titoki	<i>Alectryon excelsus</i>	3.5	1	950	Protected - Road Reserve	Retain

82	Titoki	<i>Alectryon excelsus</i>	5.5	5	2750	Protected - Road Reserve	Retain
83	Titoki	<i>Alectryon excelsus</i>	5	2.5	1750	Protected - Road Reserve	Retain
85	Bottlebrush	<i>Callistemon sp.</i>	8	6	6250	Not protected - Private	Remove
86	Norway Spruce	<i>Picea abies</i>	12	5	9500	Not protected - Private	Retain
87	Titoki	<i>Alectryon excelsus</i>	6	4	2200	Protected - Road Reserve	Retain
594	2 x Eucalyptus	<i>Eucalyptus sp.</i>	20	10	3000	Not protected - Private	Remove (Previous reference 48)
595	Cypress sp.	Cypress sp.	8	3	800	Not protected - Private	Consider for retention
595	Magnolia	<i>Magnolia grandiflora</i>	7	7	1200	Protected - Road Reserve	Retain
596	China Doll	<i>Radermachera sinica</i>	6	3	700	Not protected - Private	Remove
597	Cherry	<i>Prunus sp.</i>	8	8	2000	Not protected - Private	Consider for retention
598	Chinese Privet	<i>Ligustrum sinense</i>	6	3	500	Not protected - Private	Remove
599	Cabbage tree	<i>Cordyline australis</i>	8	3	1500	Not protected - Private	Retain
600	Guava	<i>Psidium guajava</i>	5	3	500	Not protected - Private	Remove
601	Macadamia	<i>Macadamia sp.</i>	7	3	400	Not protected - Private	Remove
602	Feijoa	<i>Acca sellowiana</i>	3	3	500	Not protected - Private	Remove
603	Citrus sp.	<i>Citrus sp.</i>	6	3	500	Not protected - Private	Remove
604	Japanese cedar	<i>Cryptomeria japonica</i>	14	6	2500	Not protected - Private	Remove
605	Monkey apple	<i>Syzygium smithii</i>	11	6	2500	Not protected - Private	Survey tree to confirm location. Remove if located within the site

## **NS1 (OR-058)**



**Figure 3 – Tree locations for NS1**

Tree #	Common name	Species	Height (m)	Canopy radius (m)	Circumference	Protection	Proposed action
110	Karo	<i>Pittosporum crassifolium</i>	5.5	2	2200	Protected - Road Reserve	Retain
114	Pohutukawa	<i>Metrosideros excelsa</i>	11	6	5500	Not protected - Private	Retain
115	Kohuhu hedge	<i>Pittosporum tenuifolium</i>	2.5	0.5	300	Not protected - Private	Remove
117	<i>Rhus</i>	<i>Rhus sp.</i>	8	5	2500	Not protected - Private	Remove

606	Monkey apple and Robinia	<i>Syzygium smithii</i> <i>Robinia pseudoacacia</i>	5	3	500	Not protected - Private	Remove
607	Liquidambar and Monkey apple	<i>Liquidambar styraciflua</i> <i>Syzygium smithii</i>	7	3	500	Not protected - Private	Survey tree to confirm location. Remove if located within the site

DRAFT



## **ST42 (OR-052)**



**Figure 4 – Tree locations for ST42**

<b>Tree #</b>	<b>Common name</b>	<b>Species</b>	<b>Height (m)</b>	<b>Canopy radius (m)</b>	<b>Circumference</b>	<b>Protection</b>	<b>Proposed action</b>
128	Titoki	<i>Alectryon excelsus</i>	6	3	1500	Protected - Road Reserve	Retain
129	Titoki	<i>Alectryon excelsus</i>	5	4	1800	Protected - Road Reserve	Retain
130	Titoki	<i>Alectryon excelsus</i>	6	3.5	2200	Protected - Road Reserve	Retain
131	Tecoma hedge	<i>Tecoma sp.</i>	3	0.5	100	Not protected - Private	Remove
132	Titoki	<i>Alectryon excelsus</i>	4	3.5	1500	Protected - Road Reserve	Retain

608	Privet, wattle, tobacco weed	<i>Privet Ligustrum lucidum</i>	5	3	400	Not protected - Private	Remove
609	Puriri	<i>Vitex lucens</i>	7	4	700	Not protected - Private	Neighbouring tree
610	Lemonwood	<i>Pittosporum eugenioides</i>	6	3	500	Not protected - Private	Neighbouring tree
611	Karo	<i>Pittosporum crassifolium</i>	6	3	500	Not protected - Private	Consider for retention
612	Bottlebrush	<i>Callistemon species</i>	7	4	1000	Not protected - Private	Remove

DRAFT

## ST55



Figure 5 – Tree locations for ST55

Tree #	Common name	Species	Height (m)	Canopy radius (m)	Circumference	Protection	Proposed action
138	Titoki	<i>Alectryon excelsus</i>	7	4	2200	Protected - Road Reserve	Retain
142	Titoki	<i>Alectryon excelsus</i>	5	2.5	1850	Protected - Road Reserve	Retain
613	Lemonwood	<i>Pittosporum eugenioides</i>	3	1	200	Not protected - Private	Neighbouring vegetation
614	Titoki	<i>Alectryon excelsus</i>	3	1	200	Not protected - Private	Remove
615	Chinese Privet	<i>Ligustrum sinense</i>	3	2	200	Not protected - Private	Remove

## RC135 (OR-045)

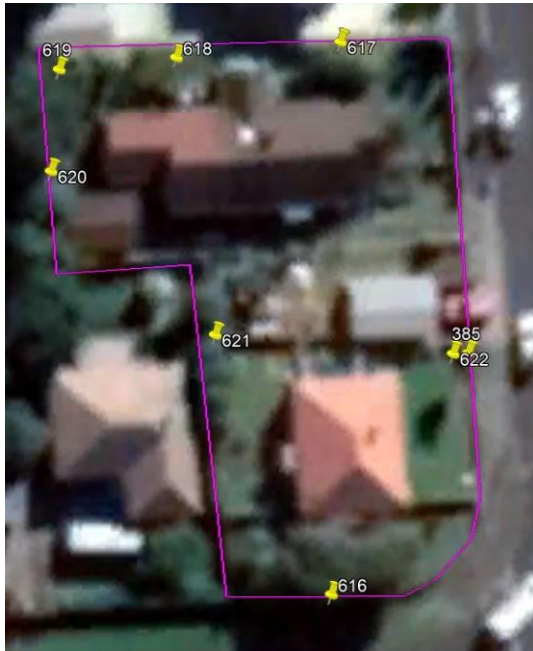


Figure 6 – Tree locations for RC135

Tree #	Common name	Species	Height (m)	Canopy radius (m)	Circumference	Protection	Proposed action
616	Bottlebrush	<i>Callistemon species</i>	6	3	1500	Not protected - Private	Consider for retention
617	Camellia	<i>Camellia sp.</i>	4	2	800	Not protected - Private	Remove
618	Fig	<i>Ficus carica</i>	5	3	2000	Not protected - Private	Remove
619	Camellia, Prunus,	<i>Camellia sp.</i> <i>Prunus sp.</i>	5	3	600	Not protected - Private	Remove

	<b>Bougainvillea</b>						
620	Avocado	<i>Persea americana</i>	6	3	600	Not protected - Private	Consider for retention
621	Pittosporum	<i>Pittosporum tenuifolium</i>	5	2	300	Not protected - Private	Survey location. Consider for retention
622	Cabbage	<i>Cordyline australis</i>	6	1	600	Not protected - Private	Consider for retention (previous reference #385)

DRAFT

**RC161 (OR-033)**



**Figure 7 – Tree locations for RC161**

Tree #	Common name	Species	Height (m)	Canopy radius (m)	Circumference	Protection	Proposed action
371	Chinese privet, Camellia, Mahoe, Tarata, Karo	<i>Ligustrum sinense</i> <i>Camellia sp.</i> <i>Melicytus ramiflorus</i> <i>Pittosporum eugenioides</i> <i>Pittosporum crassifolium</i>	4.5	2	1250	Not protected - Private	Remove
372	Pohutukawa, Avocado x2	<i>Metrosideros excelsa</i> <i>Persea americana</i>	12	6	9400	Not protected - Private	Retain Pohutukawa
373	Jasmine Group, yucca	<i>Jasminum sp.</i> <i>Yucca sp.</i>	4	1	3000	Not protected - Private	Remove
623	Yucca Dragon tree	<i>Yucca gigantea</i> <i>Dracaena draco</i>	4	1	300	Not protected - Private	Remove
624	Privet	<i>Ligustrum lucidum</i>	5	3	400	Not protected - Private	Remove
625	Privet and Karaka	<i>Ligustrum lucidum</i> <i>Corynocarpus laevigatus</i>	8	5	1500	Not protected - Private	Consider Karaka tree for retention
626	Privet	<i>Ligustrum lucidum</i>	4	3	300	Not protected - Private	Remove
627	Feijoa, citrus and Loquat	<i>Acca sellowiana</i> <i>Citrus sp.</i> <i>Eriobotrya</i>	5	3	500	Not protected - Private	Remove

		<i>japonica</i>					
628	Castor oil, Avocado, Prunus, Guava, Feijoa	<i>Ricinus communis Persea Americana Psidium guajava Acca sellowiana</i>	6	4	600	Not protected - Private	Remove
629	Citrus	<i>Citrus sp.</i>	3	2	300	Not protected - Private	Remove

DRAFT



**NM13 (OR-007)**



**Figure 8 – Tree locations for NM13**

Tree #	Common name	Species	Height (m)	Canopy radius (m)	Circumference	Protection	Proposed action
366	Tecoma hedge	<i>Tecoma capensis</i>	3	2	200	Not protected - Private	Remove
367	Titoki	<i>Alectryon excelsus</i>	4.5	2	1300	Protected - Road Reserve	Retain
368	Titoki	<i>Alectryon excelsus</i>	6	2	1500	Protected - Road Reserve	Retain

369	Titoki	<i>Alectryon excelsus</i>	4.5	2	1300	Protected - Road Reserve	Retain
396	Cabbage tree, Southern magnolia, China doll, Houpara, Mahoe, Liquidambar, Tairere	<i>Cordyline australis</i> <i>Magnolia grandiflora</i> <i>Radermachera sinica</i> <i>Pseudopanax lessonii</i> , <i>Melicytus ramiflorus</i> <i>Liquidambar styraciflua</i> , <i>Beilschmiedia tarairi</i>	10	4	2800	Not protected - Private	Liquidambar, Cabbage tree, Magnolia and Tairere could be considered for retention
397	Rewarewa	<i>Knightia excelsa</i>	7	1	1550	Protected - Road Reserve	Retain
401	Rewarewa	<i>Knightia excelsa</i>	9	1.5	1550	Protected - Road Reserve	Retain
629	Citrus	<i>Citrus sp.</i>	3	2	300	Not protected - Private	Remove
630	Tecoma hedge	<i>Tecoma capensis</i>	4	2	200	Not protected - Private	Remove
631	2 x Pohutukawa, Olive	<i>Metrosideros excelsa</i> <i>Olea europaea</i>	10	6	1600	Not protected - Private	Consider for retention
632	Kohuhu hedge, Privet	<i>Pittosporum tenuifolium</i> <i>Ligustrum lucidum</i>	4	1	200	Not protected - Private	Remove
633	Cabbage and Ficus	<i>Cordyline australis</i>	6	3	600	Not protected - Private	Remove
634	Prunus Sp.	<i>Prunus Sp.</i>	4	3	1000	Not protected - Private	Remove
635	Variegated Pohutukawa	<i>Metrosideros sp.</i>	10	6	2000	Not protected - Private	Consider for retention

## **RS15 (OR-009)**



**Figure 9 – Tree locations for RS15**

Tree #	Common name	Species	Height (m)	Canopy radius (m)	Circumference	Protection	Proposed action
404	Claret ash	Fraxinus oxycarpa 'Raywoodii'	5	2	1200	Protected - Road Reserve	Retain
405	Claret ash	Fraxinus oxycarpa 'Raywoodii'	6	3	1550	Protected - Road Reserve	Retain

406	Claret ash	Fraxinus oxycarpa 'Raywoodii'	8	5	1850	Protected - Road Reserve	Retain
407	Karaka	Corynocarpus laevigatus	6	3	2500	Not protected - Private	Retain
414	Claret ash	Fraxinus oxycarpa 'Raywoodii'	7	5	3150	Protected - Road Reserve	Retain
504	Totara	Podocarpus totara	6.5	4	2500	Protected - Road Reserve	Retain
505	Totara	Podocarpus totara	3.5	1.5	1000	Protected - Road Reserve	Retain
506	Pohutukawa	Metrosideros excelsa	12	9	15700	Not protected - Private	Retain
507	Totara	Podocarpus totara	5.5	3.5	1850	Protected - Road Reserve	Retain
508	Totara	Podocarpus totara	5.5	3.5	1850	Protected - Road Reserve	Retain
636	Prunus sp.	<i>Prunus sp.</i>	5	3	1000	Not protected - Private	Remove
637	Jasmine hedge	<i>Jasminum polyanthum</i>	2	1	100	Not protected - Private	Survey hedge to confirm location. Remove if located within the site
638	Prunus and Karo	<i>Prunus sp.</i> <i>Pittosporum crassifolium</i>	4	1	200	Not protected - Private	Remove
639	Privet	<i>Ligustrum lucidum</i>	4	4	300	Not protected - Private	Remove
640	Radamacheria	<i>Radermachera sinica</i>	6	3	1500	Not protected - Private	Remove
641	Privet, Prunus, Bangalow palm	<i>Ligustrum lucidum</i> <i>Prunus sp.</i> <i>Archontophoenix cunninghamiana</i>	5	3	400	Not protected - Private	Remove

642	Prunus	<i>Prunus sp.</i>	5	4	1000	Not protected - Private	Remove
643	Chinese Privet	<i>Ligustrum sinense</i>	4	1	100	Not protected - Private	Remove
644	English Oak	<i>Quercus robur</i>	13	8	3000	Not protected - Private	Retain
645	Gleditsia	<i>Gleditsia triacanthos</i>	8	5	1000	Not protected - Private	Neighbouring tree
646	Yucca	<i>Yucca gigantea</i>	4	1	500	Not protected - Private	Remove

DRAFT